



**NIMICT**

NATIONAL INITIATIVE FOR  
MINORITY INVOLVEMENT IN  
NEUROLOGICAL CLINICAL TRIALS

# Stroke Basics

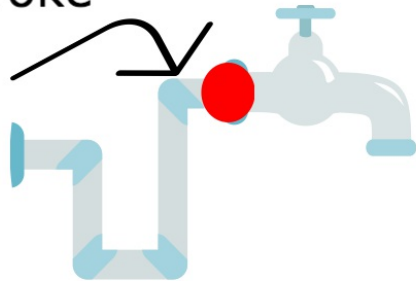


## WHAT IS A STROKE?

- A stroke occurs when the blood supply to the brain gets cut off
- The blood supply to the brain can get cut off in two ways:

→ A clot blocks an artery, called an ischemic stroke

An ischemic stroke is a clogged pipe



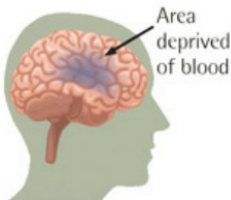
→ An artery bursts and bleeds, called a hemorrhagic stroke

A hemorrhagic stroke is a burst pipe

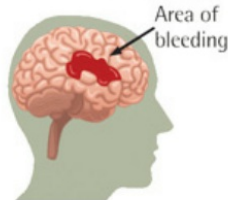


Another illustration of ischemic and hemorrhagic strokes

Ischemic Stroke



Hemorrhagic Stroke



Obstruction blocks blood flow to part of the brain



Weakened vessel wall ruptures, causing bleeding in the brain



## WHAT IS A TIA?

- A TIA, or Transient Ischemic Attack, is a stroke that comes and goes quickly
- A TIA happens when there is a brief stop in blood supply to the brain
- TIAs can be warning signs for future strokes!

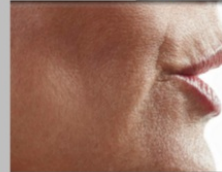
## WHAT ARE STROKE AND TIA SYMPTOMS?



**F**ace drooping.



**A**rm weakness.



**S**peech difficulty.



**T**ime to call 911.

Spot a stroke **F.A.S.T.**



StrokeAssociation.org

